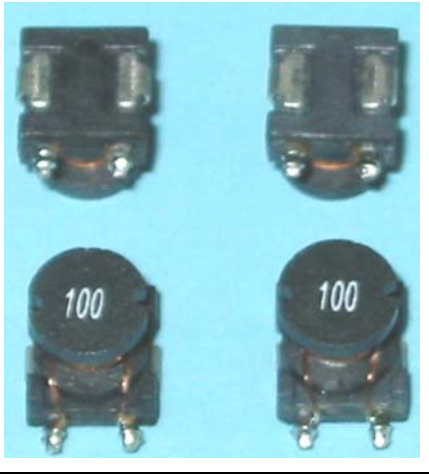


# TSPB TYPE

## SMD POWER INDUCTOR

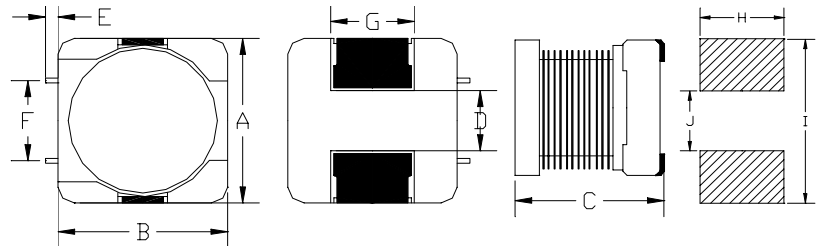


### FEATURE:

- High current and inductance capacity;
- Specially designed for surface mounting equipment , good for high density application;
- Low core loss for high frequency power application.
- Large terminal surface for good PCB bonding.

### SHAPES&DIMENSION:

Unit:mm

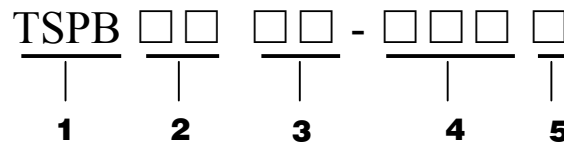


### APPLICATION

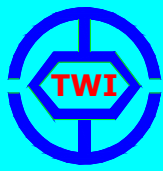
- DC/DC converter
- Switching regulators
- Power amplifiers
- Power supplies
- Noise/EMI/RFI filters

Part No.	A (MAX)	B (MAX)	C (MAX)	D (REF)	E	F	G	H	I	J
TSPB 0806	7.9	7.9	6.0	4.5	1.5	4.5	3.8	4.8	11.0	4.0
TSPB 0807	7.9	7.9	7.0	4.5	1.5	4.5	3.8	4.8	11.0	4.0
TSPB 0808	7.9	7.9	8.0	4.5	1.5	4.5	3.8	4.8	11.0	4.0
TSPB 0809	7.9	7.9	9.0	4.5	1.5	4.5	3.8	4.8	11.0	4.0
TSPB 1207	11.5	11.5	7.0	6.5	1.5	6.5	4.0	5.0	13.5	6.0
TSPB 1208	11.5	11.5	8.0	6.5	1.5	6.5	4.0	5.0	13.5	6.0
TSPB 1210	11.5	11.5	10.0	6.5	1.5	6.5	4.0	5.0	13.5	6.0
TSPB 1213	11.5	11.5	13.0	6.5	1.5	6.5	4.0	5.0	13.5	6.0

### PART NUMBERING SYSTEM:



- 1) PRODUCT SYMBOL
- 2) OUTSIDE DIA :m/m
- 3) BODY HEIGHT :m/m
- 4) INDUCTANCE :μH
- 5) TOLERANCE :K 10%, L 15%, M 20%



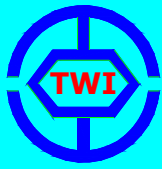
# TSPB TYPE

## SMD POWER INDUCTOR

### STANDARD SPECIFICATION

Part Inductance		DCR(Ω)Max.								Rated D.C. Current(A)Max.							
No.	L(μH)	TSPB 0806	TSPB 0807	TSPB 0808	TSPB 0809	TSPB 1207	TSPB 1208	TSPB 1210	TSPB 1213	TSPB 0806	TSPB 0807	TSPB 0808	TSPB 0809	TSPB 1207	TSPB 1208	TSPB 1210	TSPB 1213
1R0	1.0	0.08	0.07	0.050	0.05	0.012				2.60	2.90	3.00	3.50	9.00			
1R5	1.5	0.09	0.08	0.055	0.06	0.015				2.30	2.60	2.80	3.00	8.00			
2R2	2.2	0.10	0.09	0.060	0.07	0.018				2.00	2.30	1.80	2.80	7.00			
3R3	3.3	0.15	0.13	0.065	0.08	0.027	0.022	0.036		1.50	2.00	1.60	1.80	6.40	7.00	10.00	
4R7	4.7	0.18	0.16	0.075	0.09	0.038	0.032	0.047		1.2	1.50	1.40	1.60	5.40	5.60	8.00	
6R8	6.8	0.25	0.23	0.09	0.10	0.046	0.039	0.066		1.10	1.20	1.20	1.40	4.60	5.20	7.00	
100	10	0.39	0.37	0.11	0.11	0.085	0.054	0.086	0.059	0.90	1.10	1.00	1.20	3.80	5.00	5.50	8.00
150	15	0.54	0.51	0.19	0.16	0.10	0.075	0.13	0.075	0.70	0.90	0.80	1.00	3.00	3.90	4.50	7.00
220	22	0.68	0.64	0.23	0.18	0.14	0.101	0.19	0.097	0.58	0.70	0.70	0.80	2.60	3.20	3.50	6.00
330	33	0.96	0.86	0.29	0.25	0.20	0.150	0.25	0.138	0.50	0.58	0.60	0.70	2.00	2.80	3.00	5.00
470	47	1.38	1.27	0.48	0.40	0.28	0.207	0.38	0.207	0.40	0.50	0.50	0.60	1.60	2.40	2.60	4.00
680	68	2.20	2.00	0.59	0.52	0.40	0.334	0.56	0.293	0.31	0.40	0.40	0.50	1.40	2.00	2.40	3.00
101	100	2.85	2.65	0.77	0.68	0.61	0.472	0.85	0.470	0.27	0.31	0.30	0.40	1.20	1.60	1.90	2.40
151	150	4.10	3.80	1.40	1.25	1.02	0.615	1.10	0.780	0.22	0.27	0.26	0.30	1.00	1.40	1.40	2.10
221	220	5.65	5.06	1.80	1.64	1.27	0.796	1.80	1.080	0.18	0.22	0.22	0.26	0.80	1.00	1.20	1.90
331	330	11.20	9.20	2.20	2.02	2.02		2.20	1.400	0.16	0.18	0.20	0.22	0.60		1.00	1.40
471	470	15.64	13.80	3.40	3.10	3.00		2.80	2.010	0.14	0.16	0.19	0.20	0.50		0.80	1.10
681	680	17.86	15.71	4.20	3.95	3.78		3.38	2.66	0.10	0.14	0.18	0.19	0.40		0.60	0.96
102	1000	19.35	17.66	8.50	7.95	4.61		3.96	3.15	0.08	0.10	0.15	0.18	0.30		0.40	0.80
152	1500			11.00	9.58							0.12	0.15				
222	2200			13.90	11.54							0.10	0.12				
332	3300			25.00	20.55							0.08	0.10				
472	4700			32.80	28.90							0.06	0.08				
682	6800			35.87	31.53							0.04	0.06				
103	10000			37.65	34.16							0.02	0.04				

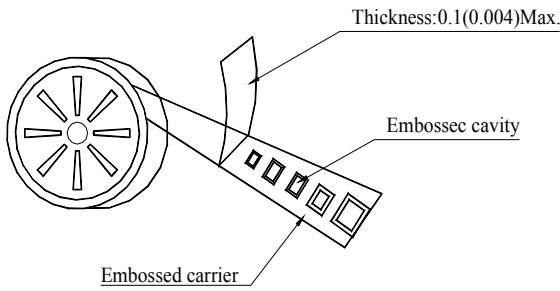
- 1.Test Freq(L):1KHz 0.25V;
- 2.Tolerance of Inductance: 1.0~10000μH±10%/15%/20%(K,L,M);
- 3.Operating temperature-40°Cto+85°C.
- 4.Rated current :The inductance should fall less than 10% of its value .
- 5.Rated current to for a than less 40°C rise above 25°C ambient;
- 6.Electrical specifications at 25°C;



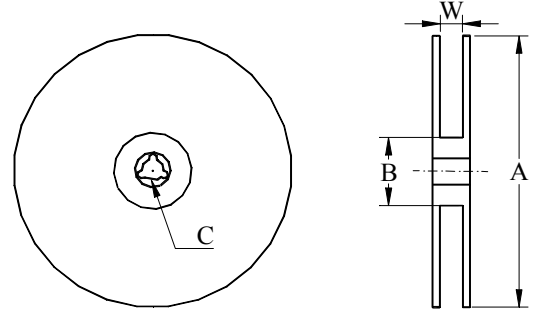
# TSPB TYPE

## SMD POWER INDUCTOR

### PACKAGING FOR SMC



### CARRIER TAPE REELS

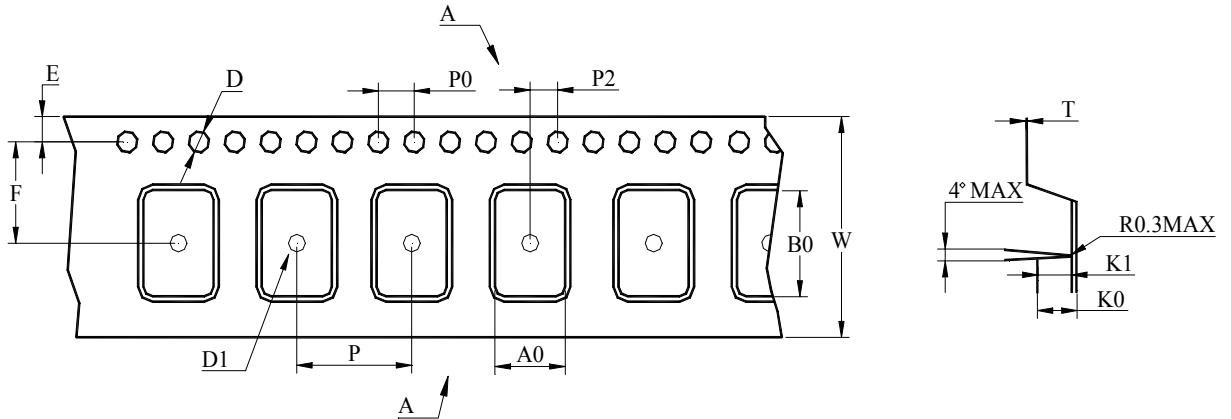


Dimension in mm

### REEL DIMENSION

Part No.	TYPE	A	B	C	W	PCS/REEL
TSPB0806	16 mm	330±2	100±1	13.5±1	16.5±0.5	500
TSPB0807	16mm	330±2	100±1	13.5±1	16.5±0.5	400
TSPB0808	16mm	330±2	100±1	13.5±1	16.5±0.5	300
TSPB0809	16mm	330±2	100±1	13.5±1	16.5±0.5	200
TSPB1207	24mm	330±2	100±1	13.5±1	24.5±0.5	500
TSPB1208	24mm	330±2	100±1	13.5±1	24.5±0.5	400
TSPB1210	24mm	330±2	100±1	13.5±1	24.5±0.5	300
TSPB1213	24mm	330±2	100±1	13.5±1	24.5±0.5	200

### TAPE DIMENSION/PACKAGING



### TAPE DIMENSION

Dimension in mm

Part No.	A0 (±0.10)	B0 (±0.10)	K0 (±0.10)	P (±0.10)	P0 (±0.10)	W (±0.10)	T (±0.05)
TSPB0806	8.00	9.70	6.20	12.00	4.00	16.00	0.40
TSPB0807	8.00	9.70	7.20	12.00	4.00	16.00	0.40
TSPB0808	8.00	9.70	8.20	12.00	4.00	16.00	0.40
TSPB0809	8.00	9.70	9.20	12.00	4.00	16.00	0.40
TSPB1207	11.80	13.50	7.20	16.00	4.00	24.00	0.40
TSPB1208	11.80	13.50	8.20	16.00	4.00	24.00	0.40
TSPB1210	11.80	13.50	10.20	16.00	4.00	24.00	0.40
TSPB1213	11.80	13.50	13.20	16.00	4.00	24.00	0.40