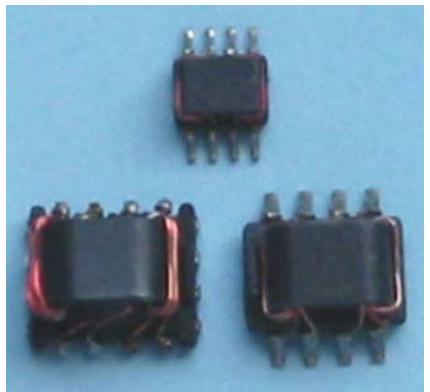


# BBW/L TYPE COMMON MODE INDUCTOR

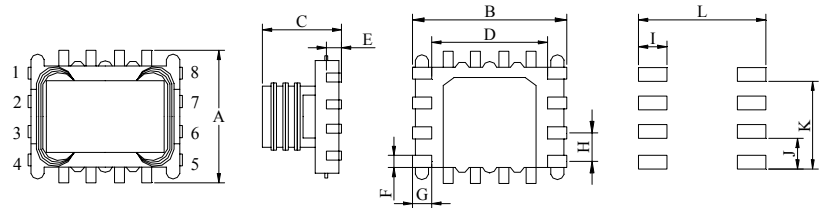


### FEATURE:

- Dual-winding configuration makes 1 unit suffice for one port .
- An excellent TPA/TPB impedance balance is ensured due to winding on single core.
- Suitable for reflow solderable.

### SHAPES&DIMENSION FOR BBW SERIES

Unit:mm



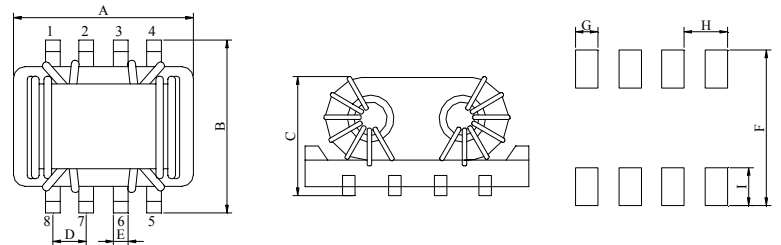
Part No.	A	B	C	D	E
BBW 6560	5.7±0.30	6.5±0.30	3.75MAX	5.0	0.7
BBW 5050	5.0±0.30	5.0±0.30	2.50MAX	2.9	0.5

Part No.	F	G	H	I	J	K	L
BBW 6560	0.40	0.75	1.27	1.5	1.27	3.81	8.0
BBW 5050	0.25	0.75	0.80	1.5	0.80	2.40	6.0

### SHAPES&DIMENSION FOR BBWL SERIES

Unit:mm



Part No.	A	B	C	D	E
BBWL 6560	6.1MAX	6.7MAX	3.75MAX	1.3	0.5
BBWL 5050	4.2MAX	5.0±0.30	2.50MAX	0.8	0.3

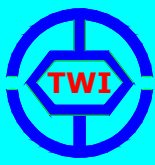
Part No.	F	G	H	I
BBWL 6560	8.0	0.80	1.27	1.5
BBWL 5050	5.5	0.50	0.80	1.5

### STANDARD SPECIFICATION

Part Number	Rated Current (mA)	Common Mode Impedance(Ω)		DCR(mΩ) max.	Withstand Voltage (Vdc)	Insulation Resistance (Ω)min
		at 100MHz	at 300MHz			
BBW/L6560-201	500	100min	300min	12.0	100	100M
BBW/L6560-301	500	225min	450min	20.0	100	100M
BBW/L6560-501	500	375min	550min	30.0	100	100M
BBW/L5050-900	500	90±25%	120typ	10.0	100	100M
BBW/L5050-201	500	200±25%	280typ	12.0	100	100M
BBW/L5050-301	500	300±25%	520typ	15.0	100	100M
BBW/L5050-501	500	500±25%	850typ	16.0	100	100M

Operating temperature rang -10℃to+60℃ .

Storage temperature rang -25℃to+70℃ .

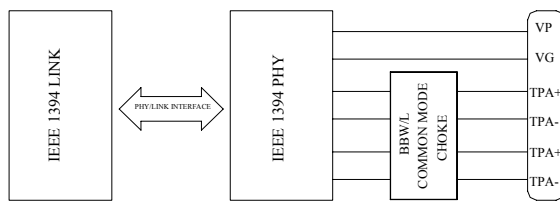


# BBW/L TYPE COMMON MODE INDUCTOR

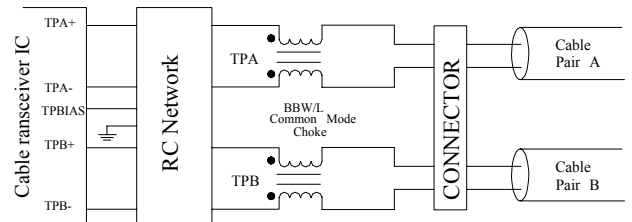
## APPLICATIONS

- Common mode noise suppression of signal lines in high speed and high density digital equipment such as personal computers and peripherals.
- Ideal for use as common-mode chokes for Twisted pair cable interface/IEEE1394 port.

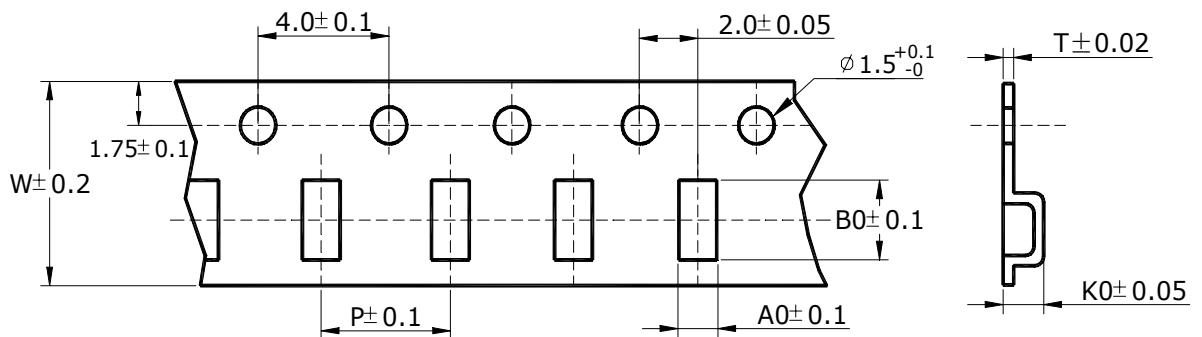
IEEE 1394 Port



Twisted Pair cable interface



## PACKAGING/TAPE DIMEN



Part No.	A0	B0	K0	W	P	T	PCS/REEL
BBW/L6560	6.90	6.4	4.25	12.0	8.0	0.30	2000/ ∅ 330mm reel
BBW/L5050	5.20	4.8	3.00	8.0	8.0	0.30	3000/ ∅ 180mm reel