

TCR TYPE SMD POWER INDUCTOR

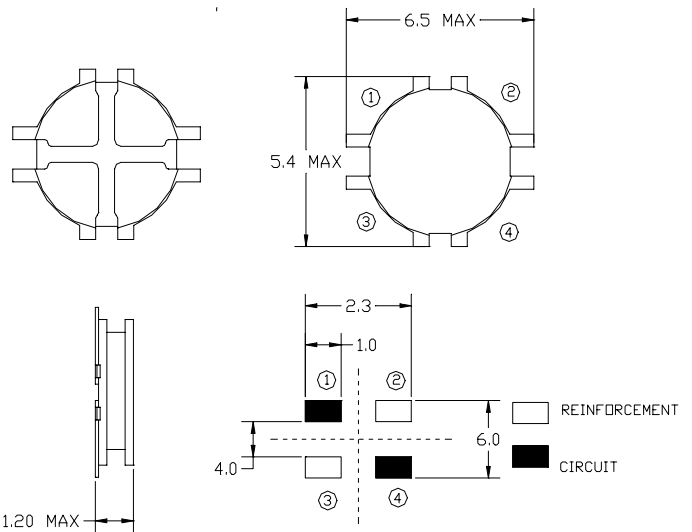


FEATURE:

- Ultra low profile and small size SMD.
- Use of high-performance ferrite for excellent DC-Bias characteristics.

SHAPES&DIMENSION:

Unit:mm



APPLICATION

- DC/DC converter
- Notebook computers
- PDA(desktop)
- Flash Memory programs
- Digital Cameras

STANDARD SPECIFICATION

Part No.	Inductance L(μH)±20%	DCR(Ω)Max.		Rated D.C Current(A)Max.	
		TCR	6554	TCR	6554
2R2	2.2	0.118		1.20	
3R3	3.3	0.186		0.96	
4R7	4.7	0.248		0.90	
6R8	6.8	0.288		0.80	
100	10	0.444		0.70	
150	15	0.552		0.60	
220	22	0.802		0.50	
330	33	1.32		0.42	
470	47	1.656		0.34	

1. Test Freq(L): 2.52MHz 0.25V.
2. Tolerance of Inductance: 2.2~47 μ H ± 20%(M).
3. Operating temperature -40°C to +85°C.
4. DC current at which the inductance drops 10%(typ) from its value without current.
5. Average current to for a than less 40°C rise above 25°C ambient.
6. Electrical specifications at 25°C;

PART NUMBERING SYSTEM:

